

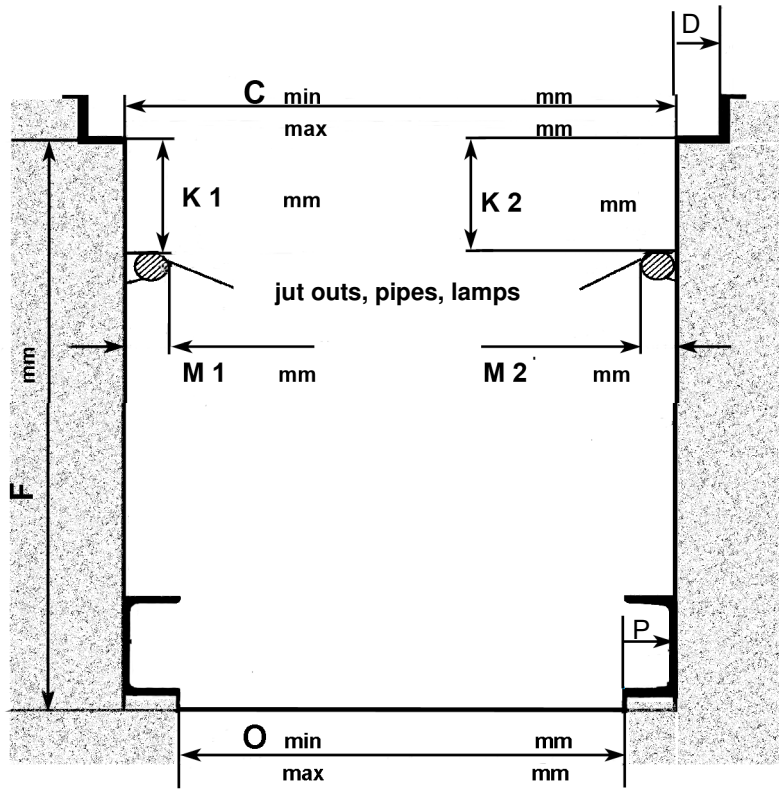
Dimensional drawing for pit lifts and support systems (BB14/1)



Pit lift type: Support system:
 Agent / customer: Contact partner's telephone/fax:
 Order number: Date / Signature:

Please comply with the "Important instructions" on dimensional drawing BB 14/2!
 Please enter all dimensions in the drawing, mark with a cross where applicable, and return to Fax.: +49(0)2371-963478
 E-mail: info@wolff-metallbearbeitung.de

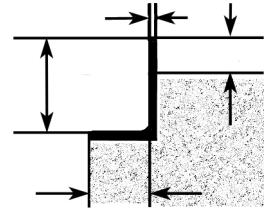
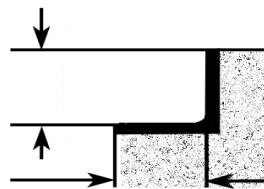
Pit dimensions: All measurements in mm!
 Measure at various points in the pit. If the layout of your pit differs significantly from our diagram, then please attach a photo or a drawing. We manufacture according to the smallest dimension. If the difference in measurement C is greater than 10 mm, then the customer must ensure parallel alignment. Dimension D indicates the possible running surface of the rollers and support system. Please take into account welded seams and the radius in the profile. As standard for pit lifts and their support systems, dimension C goes up to 1,080 mm.



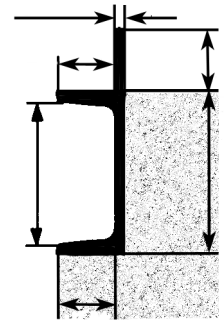
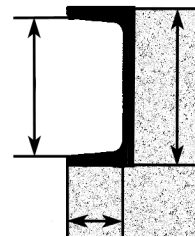
Upper pit profile:

With wheel deflector

- L-profile.....
- L-profile.....

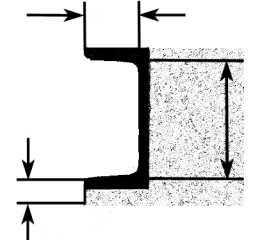
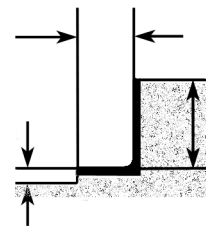


- U-profile.....
- U-profile.....
- IPB-profile.....
- IPB-profile.....



Lower pit profile:

- L-profile.....
- U-profile.....



Hanging lift chassis:

- adjustable up to 14.0 t max
- solid welded
- Special chassis.....

Chassis rollers:

- cylindrical
- 8% taper (standard rollers)
- 14 % taper (high)
- Special rollers.....

Support type:

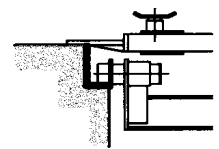
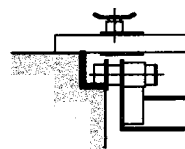
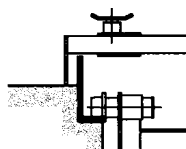
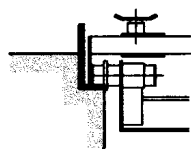
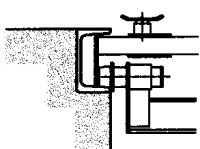
- adjustable up to 14.0 t
- solid welded to order
- Special height (attach drawing)

Floor-running lift chassis:

- freely movable
- guided in L/U profile
- running on flat iron plate (attach drawing)

Additional information:

- Pit profile opening for U-profiles available to allow insertion
- Pit with cover (attach drawing)



- Type 1
- Type 2
- Type 3
- Type 4
- Type 5

Important instructions for the dimensional drawing for pit lifts and support systems (BB14/2)

For the measurement of pits

Determine the dimensions exactly. If the pit is out of parallel in several places by more than 20 mm, then please contact us before placing an order, so that we can provide the best possible solutions. The contact face for the rollers must be at least 20 mm.

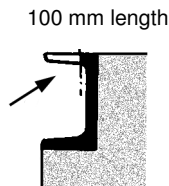
For the installation of SGS lifts

Push the adjustable rollers into the chassis so that they run from front to back in the pit profile with the least possible play. Drill the holes for the fastening bolts in this position, so that a positive-fit connection is created. If the separation of the pit profile is too large at one point, restrict the lift's potential play by welding in a stop.

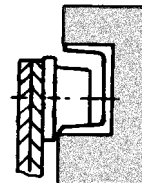
Chassis for 800 mm lift

As standard, SGS pit lifts with an 800 mm lift are supplied with a "deep drawn" chassis. It provides plenty of space beneath the vehicle, and this is very beneficial when working on assemblies. However, especially in pits with low-lying pit running rails, access beneath the vehicle is made somewhat difficult. For such circumstances, we also supply the lift fitted with a normal chassis. In dimensional drawing BB 14, please therefore be sure to select the chassis which suits you. Up to 14 t, the chassis can be provided either adjustable or welded solid (at no additional charge); over 16 t, only solid welded chassis are available.

For insertion of custom chassis in profiles closed at the top, these must be opened to 100 mm on both sides by the customer (see advice leaflet BB 24).



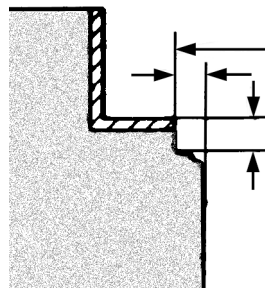
If necessary, an adjustable chassis can be planned for.



Custom size or adjustable?

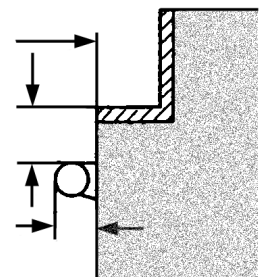
Adjustable chassis should not be used:

- in pits less than 800 mm and greater than 1000 mm
- to even out non-parallel pits
- where there is restricted transverse movability

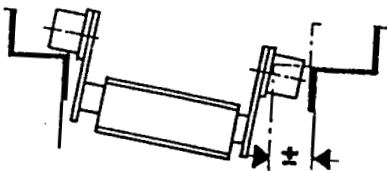


The decisive dimension for the lift's flanged rollers is the **clear pit width**

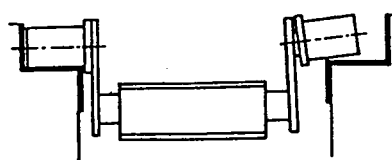
The rollers must run with the flange along a steel track. At least 10 mm of the concrete are to be cleared away. Please measure projecting concrete, cabling, and lighting.



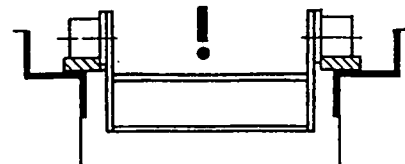
The maximum misalignment of the pit running rails is 20 mm (non-parallel defects!)



Adjustable chassis are not suitable for compensating a pit which has poor parallel alignment



It is forbidden to extend rollers! Axles and side plates would have to be significantly reinforced



The only, simplest, and above all safest solution is: weld levelling profiles in the pit

Andreas Wolff
Metallbearbeitung GmbH
Corunnastr. 38
DE-58636 Iserlohn
Fon.: +49(0)2371-67525
Fax : +49(0)2371-963478
E-mail: info@wolff-metallbearbeitung.de
www.wolff-metallbearbeitung.de



Dimensional drawing BB 14/2
Instructions for pit dimensions and lift installation